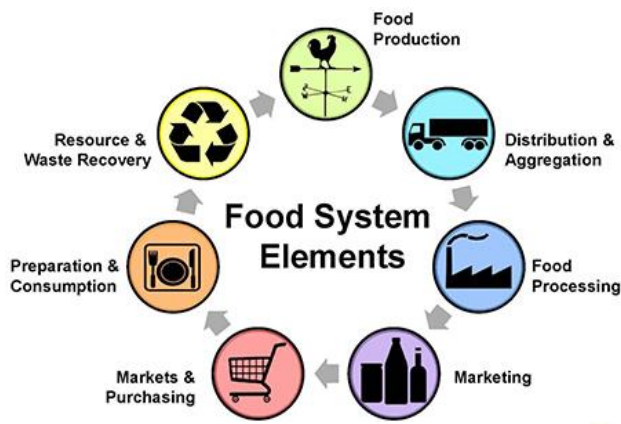


# WHAT IS THE FOOD SYSTEM?

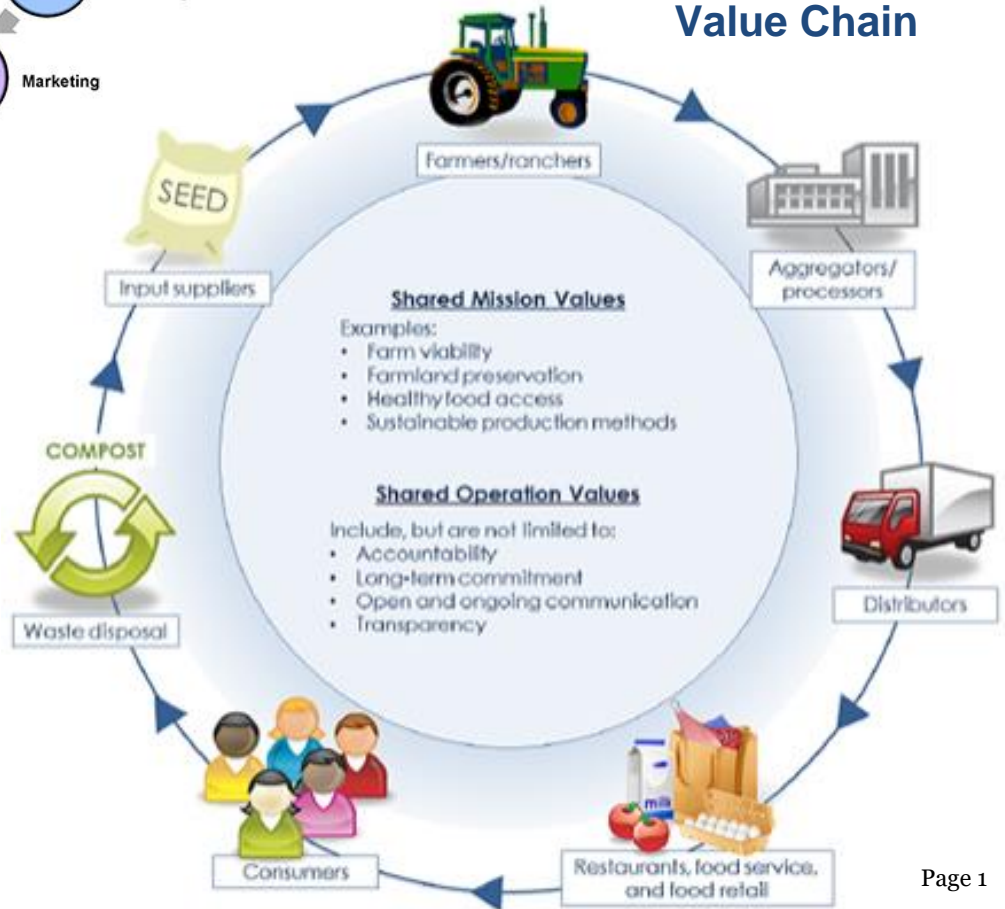
THE COMBINATION OF ALL PROCESSES AND INFRASTRUCTURES NEEDED TO FEED PEOPLE TYPICALLY FALLS INTO THREE PRIMARY CATEGORIES:



CHARLESTON | ORWIG

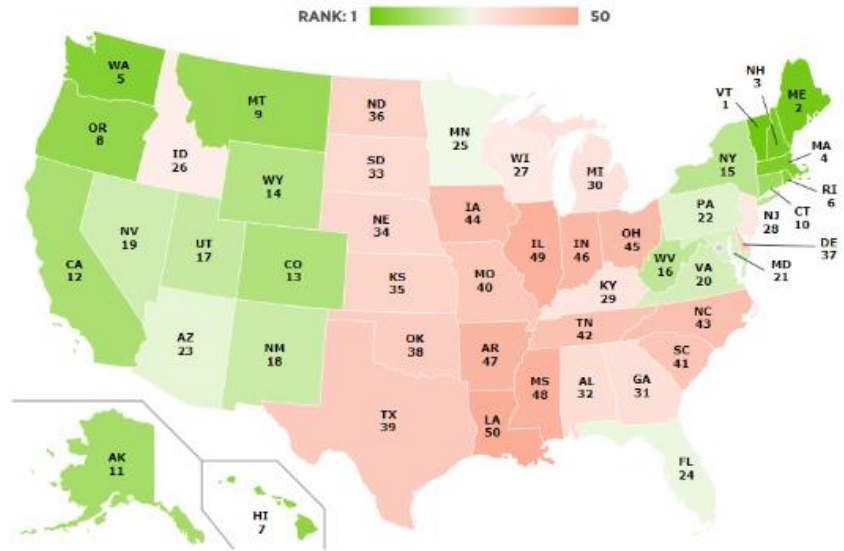


## Local Food Value Chain



# 50-State Food System Scorecard

From farm to fork, our food system should be something we are proud of—supporting farmers, workers, and local economies; ensuring that everyone has access to enough nutritious food to stay healthy; and protecting our soil and water for the future.



Category	Indicators	Illinois Rank
<b>Farming outlook</b>	Farmer age; percentage of beginning farmers; farms per 100 residents; percentages of farms that are midsize, owner-occupied, operated by women, or operated by people of color; injuries from agricultural production; and total factor productivity (a measure of efficiency).	49 of 50
<b>Food produced</b>	Farmland per capita, percentage of cropland in fruits and vegetables, percentage of cropland in the top three crops, percentage of principal crop acres used for major animal feed and fuel crops, and meat production and large feeding operations per farm acres.	48 of 50
<b>Reduced resource reliance</b>	Percentage of farm acres treated with commercial fertilizers, farm acres treated with chemical pesticides, water and irrigation resilience, fuel costs as a measure of energy use, and on-farm renewable energy operations.	46 of 50
<b>Reduced ecosystem impacts</b>	Percentage of total climate emissions from agriculture, agriculture climate emissions per farm acres, carbon loss or gain from land-use change and forestry, erosion rates on farmland, nutrient loss from watersheds per land area, percentage of waters that are impaired, and percentage of area with low groundwater quality due to high nitrate levels.	47 of 50
<b>Conservation practices</b>	Ratio of acres with no-till to conservation or conventional tillage, percentage of crop acres using cover crops, percentage of farms using rotational or management-intensive grazing, percentage of farms using alley cropping or silvopasture, percentage of farmland under conservation easement, percentage of farmland managed with organic practices, and percentage of select animal products produced using organic management.	49 of 50
<b>Farm investments</b>	Funding for on-farm conservation assistance to farmers to implement new practices and enhance stewardship; farm acres set aside for conservation; conservation innovation and regional partnership grant funding; organic research and development funding; agroecology research and development grant funding; and sustainable food systems programs and institutions.	34 of 50
<b>Food infrastructure</b>	Number of farmers markets; number of food hubs; number of food policy councils, coalitions, or networks; capacity for food waste management via composting; and percentage of census tracts with at least one healthier food retailer within a half-mile of tract boundary.	32 of 50
<b>Diet &amp; health outcomes</b>	Prevalence of household-level food insecurity; percentages of adults who consume fruit, or vegetables, less than once daily; age-adjusted percentage of adults with fair or poor self-reported health; percentage of adults who are overweight or obese; percentage of children 10-17 years old who are overweight or obese; age-adjusted percentages of adults with type 2 diabetes or diagnosed hypertension; and health care expenditures per capita.	22 of 50
<b>Food investments</b>	Grant funding for local food and farmers market promotion; percent of farmers markets that accept SNAP and other federal nutrition benefits; and grant funding to incentivize fruit and vegetable purchases with SNAP dollars, bring grocery stores and other healthy food retailers to underserved communities, support farm-to-school programs, and facilitate other community food projects.	42 of 50
<b>Social determinants &amp; disparities</b>	Education gap by race; income gap by race; income inequality; gender inequality; infant mortality rate disparity by race; and percentage of the labor force with union memberships.	19 of 50
<b>Average</b>	Top 1-5: Vermont, Maine, New Hampshire, Massachusetts, Washington Bottom 45-50: Ohio, Indiana, Arkansas, Mississippi, Illinois, Louisiana	49 of 50